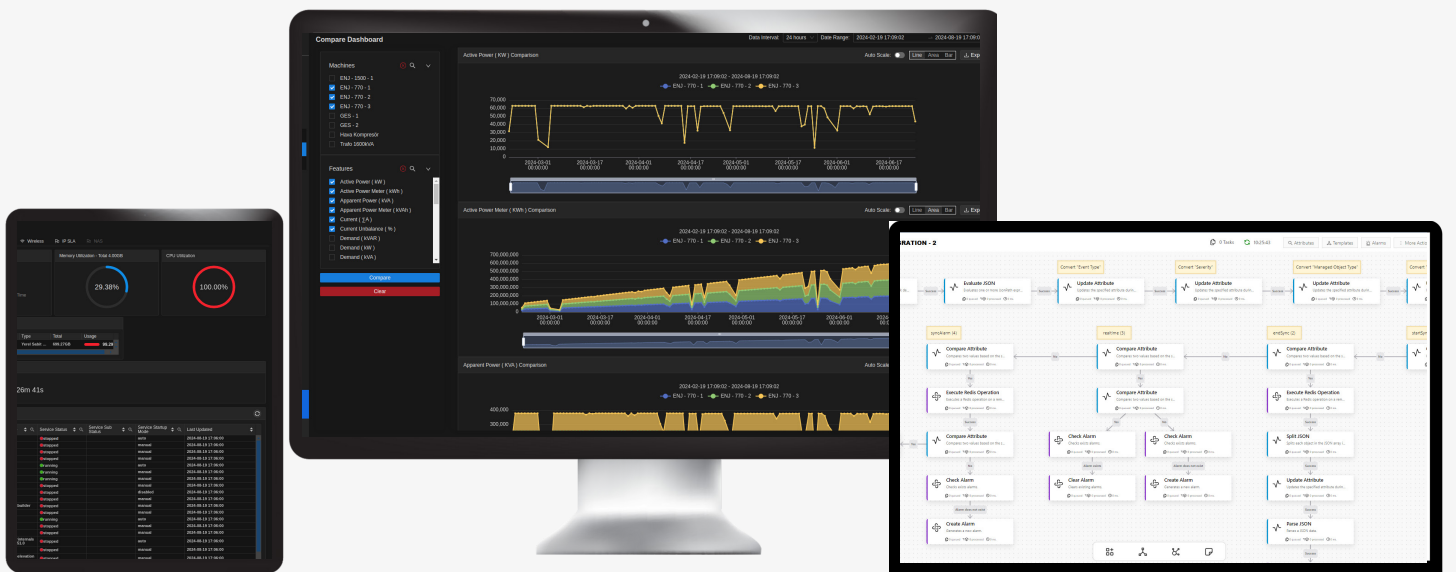


Gain complete visibility & control over IT with IT INFRASTRUCTURE MONITORING

Enforus IT Infrastructure Monitoring Software

Monitor health & performance of your entire IT environment with confidence. -Identify and fix performance issues before it even occurs. Harness the power of patented ML technology to ensure unmatched reliability, availability, and scalability across IT.

Available on cloud, on premises or hybrid.



Solution Benefits



Multi-Domain & Multi-Tenant

Manage diverse IT networks and tenants from a single platform.



Health, Performance & Availability

Continuously track the state of your IT infrastructure to ensure peak efficiency.



AI-Driven Anomaly Detection

Identify and resolve issues before they impact your operations.



Low-Code Alarm Management

Easily create and manage alarms with an intuitive, rule-based editor.



Automated Workflows

Streamline IT operations, correlations and topology maps with intelligent automation.



60+ Advanced Features

Enjoy a comprehensive suite of tools for complete IT infrastructure monitoring.



Customizable Dashboards, Reports & Alarms

Personalize to match your operational and strategic goals easily.



Flexible Deployment

Choose on-premises, cloud, or hybrid setups to suit your needs.

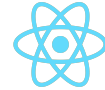
Single Platform to Monitor IT All

Centralize IT management with Enforus ITIM, a vendor-agnostic, multi-tenant monitoring solution all infrastructure components, regardless of vendor, technology or domain.

- Faster issue resolution.
- Reduce complexity.
- Protect IT infrastructure investment.
- Ensure seamless operations.



kubernetes



Microservice and container - based design with horizontal and vertical scalability

Proactive IT Management

Gain 360-degree visibility in real-time with more than **30+ monitoring capabilities** of physical infrastructure, health, availability, environment, performance, application & connectivity and vendor specific - Cisco, Dell, HP, IBM, Syslog.

- Get instant alerts & minimize downtime.
- Maximize resource utilization.

Security at the Core

Built with enterprise-grade security, Enforus ITIM protects your infrastructure from threats. Safeguard your sensitive data and critical IT assets.

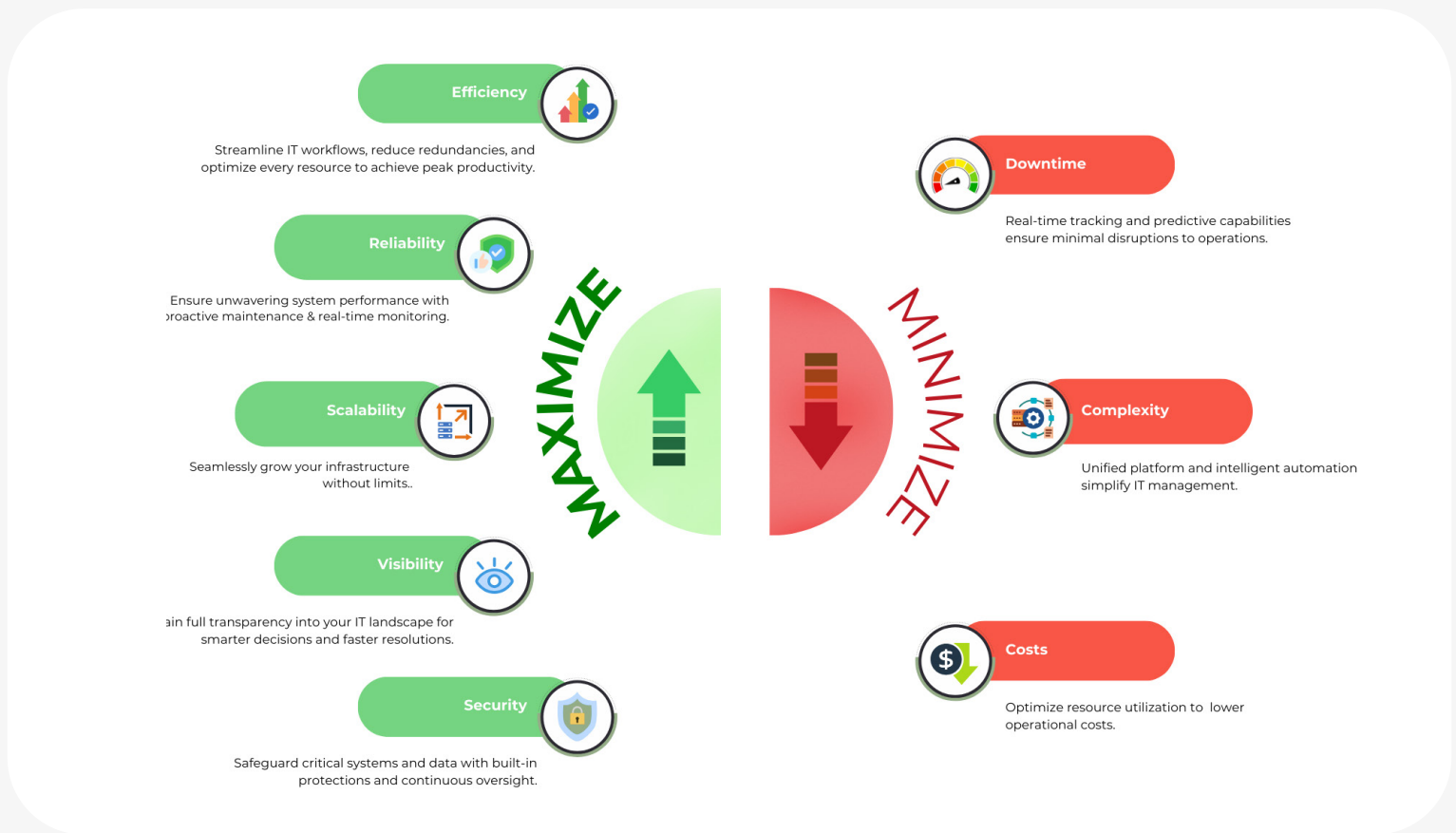
- Peace of mind with comprehensive monitoring of firewalls, gateways, and network security layers.
- Enhanced compliance with IT governance and regulatory requirements.

Unmatched Scalability

Whether managing a single site or a global enterprise, our software scales effortlessly. **Enforus ITIM can support 100k+ nodes and beyond**, seamlessly adapts to your growing IT landscape.

- Future-ready IT infrastructure with no scalability constraints.
- Reduced operational bottlenecks as your network grows.
- Flexibility to deploy on-premises, cloud, or hybrid environments based on your evolving needs.

Simplify IT Management & Maximize Performance



Enforus ITIM is more than just monitoring—it transforms how IT works for you, enabling your company and your people to focus on strategic goals and drive innovation with confidence.

Who is it for?



Enterprises



Healthcare



Banking and Finance



Manufacturing



Public



Managed Services

Enforus ITIM is a **powerful unified IT Infrastructure Monitoring** software designed to provide complete visibility across your entire organization. With its multi-domain, multi-tenant architecture, monitor all your IT assets in a single platform.

From real-time monitoring of physical and virtual assets to predictive analytics that prevent downtime, ensure peak performance- for organizations of all sizes.



What do these companies have in common? They trust Enforus ITIM to take care of their IT infrastructure, as do many others.

Supported Technologies

Servers | Databases | NoSQL | Network Equipment | Virtualization

Web Servers & Services | Converged Infrastructure | Containers