

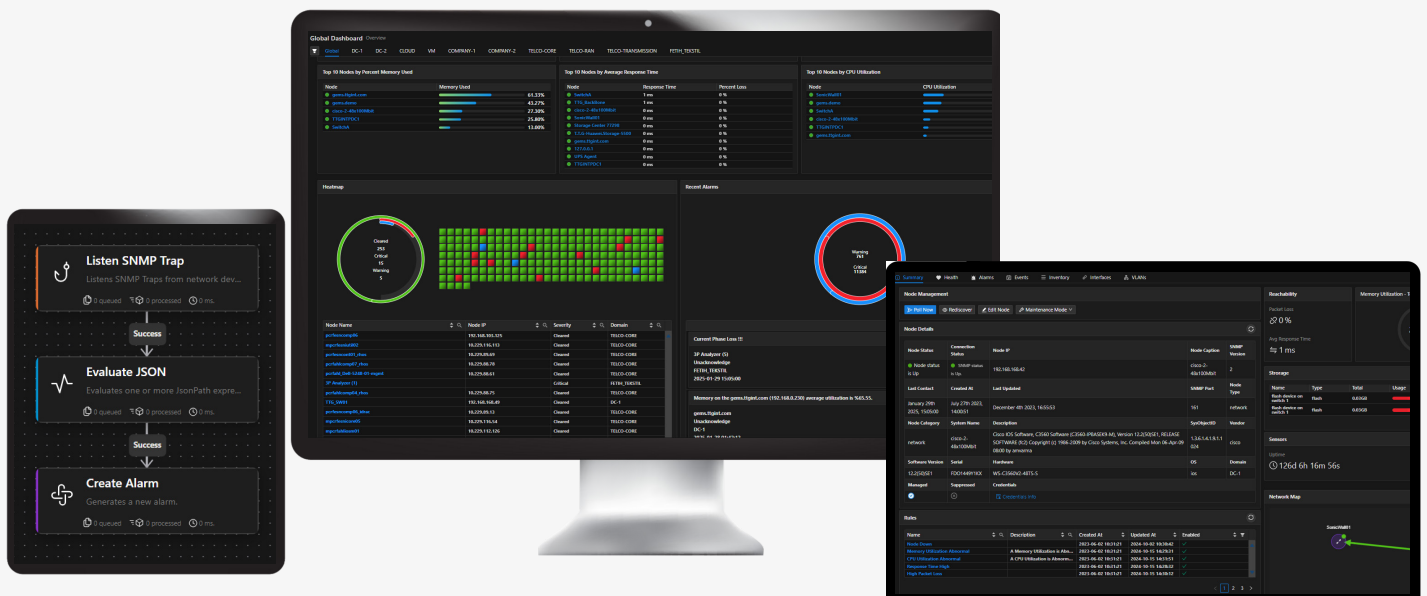
# Gain Complete Network Visibility & Maximize Uptime with Enforus NPM

## Enforus Network Performance Monitoring

Enforus NPM is an advanced Network Performance Monitoring solution designed to detect, diagnose, and resolve network issues with real-time analytics, AI-driven insights, and comprehensive monitoring capabilities, Enforus NPM ensures that your network remains secure, optimized, and always available.

From traffic analysis to troubleshooting and anomaly detection, Enforus NPM is designed to keep your network performing at its best!

Available on cloud, on premises or hybrid.





### End-to-End Network Visibility

Monitor and analyze all network elements in real-time, regardless of vendor, technology or domain.



### AI-Driven Network Insights

Identify bottlenecks, latency issues, and performance anomalies before they impact operations.



### Intelligent Node Management

Gain full visibility into all connected devices, including routers, switches, firewalls, and access points in real-time.



### Low-Code Rule Editor

Create and enforce custom monitoring rules by your networks' needs with our intuitive low-code rule editor.



### Visual Network Mapping

Understand network hierarchy, dependencies, and data flows through interactive topology maps.



### Distributed Networks Centralized

Monitor and manage complex, multi-location networks from a single console.



### Automated Configuration Management

Track, push, and revert network configurations with approval-based workflows.



### Multi-Protocol Support

Monitor network health with SNMP, NetFlow, sFlow, IPFIX, and other industry standards.



### Comprehensive Network Health Reports

Generate in-depth reports for performance optimization, compliance, and capacity planning.

## Enforus NPM Benefits

Enforus NPM is not just another network monitoring tool—it's a holistic performance optimization platform. From real-time monitoring and automated troubleshooting to traffic analysis and security enforcement, it provides a 360-degree view of your network health.

### Reduce Downtime & Optimize Network ROI

Network outages and slowdowns can cause significant financial and operational losses. Enforus NPM minimizes downtime by leveraging real-time monitoring, AI-powered anomaly detection, and predictive analytics to identify and resolve issues before they even happen.

- **Proactive Issue Detection** - Instantly detect and diagnose performance bottlenecks to prevent costly disruptions.
- **Automated Alerts & Notifications** - Get real-time alerts for potential failures before they impact business operations.
- **Low-Code Rule Editor for Automated Response** - Set custom rules to automate corrective actions and ensure continuous operations.



### Enhance Security

Ensuring a secure and high-performing network is crucial for seamless business operations. Enforus NPM continuously tracks network traffic, analyzes behavioral patterns, and detects anomalies that could signal performance degradation or security threats.

- **Anomaly Detection with AI** - Detect unusual traffic spikes, latency issues, and unauthorized access attempts.
- **End-to-End Visibility** - Monitor firewalls, VPNs, SD-WANs, and network perimeter for a secure IT environment.

### Vendor-Agnostic & Fully Customizable

Enforus NPM designed vendor-neutral, ensuring seamless integration with all major network devices, platforms, and protocols of modern IT networks.

- **Universal Compatibility** - Monitor Cisco, Netgear, QNAP, NetApp, and more.
- **Custom Dashboards & Reports** - Tailor monitoring views to your organization's needs.
- **Flexible Integration with APIs** - Extend monitoring capabilities by integrating third-party tools by your needs.

### Seamless Scalability

As networks expand with more users, devices, and cloud integrations, performance monitoring must scale accordingly. Enforus NPM supports large-scale infrastructures and adapts to dynamic network environments without losing performance.

- **Auto-Discovery & Node Management** - Automatically detect and monitor all connected network devices.
- **Scalable beyond 100K+ Nodes** - Designed to handle high-density, enterprise-level networks

## SUPPORTED TECHNOLOGIES

### Network Traffic Analysis

NetFlow  
sFlow  
IPFIX

### IT Infrastructure Monitoring

WAN  
SD-WAN  
VPN  
VoIP

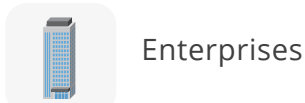
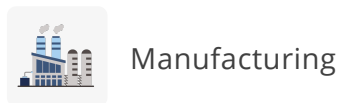
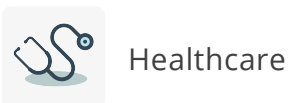
### Security & Performance Tracking

SNMP Monitoring  
QoS  
Packet Capture

### Configuration Management

Automated backups  
Approval-based changes

## Industries Served



## Enforus NPM At a Glance

Enforus NPM is not just another network monitoring tool—it's a **holistic performance optimization platform**. From real-time monitoring and automated troubleshooting to traffic analysis and security enforcement, it **gain a 360-degree view** of your network health.

With **intelligent node management**, organizations can track, analyze, and automate monitoring across all connected network elements. **The low-code rule editor** enables teams to customize alerts, define monitoring conditions, and enforce network-wide policies, ensuring optimal performance and reliability.

By integrating seamlessly with **ITIM, APM, and security monitoring tools**, Enforus NPM enables organizations to **move beyond traditional network monitoring**, ensuring that their infrastructure operates **at peak performance**, with minimal downtime and maximum security.

## Empower Your IT Team with Smarter Network Monitoring

Enforus NPM transforms **network monitoring, automation, and troubleshooting** into an intuitive, high-performance system. By **reducing downtime, enhancing security, streamlining operations, and scaling seamlessly**, Enforus NPM ensures your network operates at peak efficiency—today and in the future.



What do these companies have in common? They trust Enforus to take care of their networks, as do many others.

**Get in touch** to see Enforus NPM in action!



### Supported Technologies

Network Traffic Analysis Tools | ITIM Tools | APM Tools | APIs |  
| Security Tools | CMDB |